

53 Cresthaven Rise SW



Designer Décor – Family-Friendly Floor Plan !

Enjoy the best of all worlds in this upgraded 3 Bedroom Two Storey home with Sunny West Yard backing to Green Parkland.



*Ellyn Mendham &
Tom Westcott*
realtors®

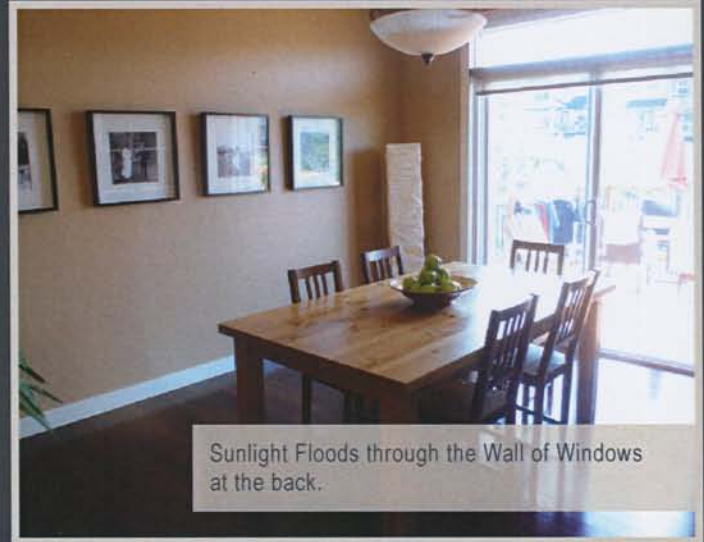


RE/MAX REALTY PROFESSIONALS

259-4141

www.CalgaryRealEstateSolutions.com

The Open Plan Main Floor offers an Amazing Great room with Ceilings that Soar Two Full Levels, a Kitchen with Maple Cabinetry & Stainless Steel Appliances, & a Separate Den/Flex Room.



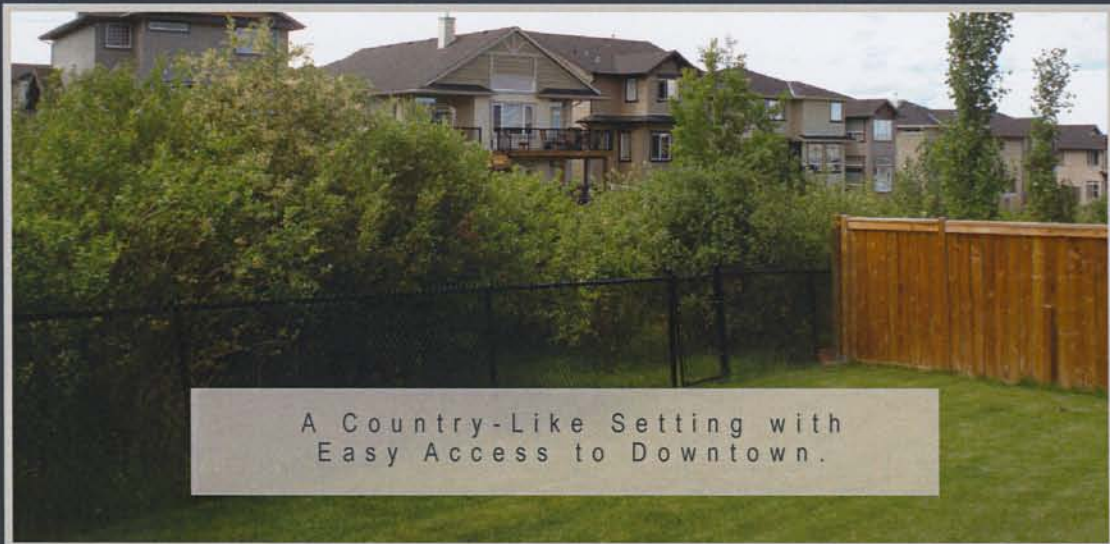
Sunlight Floods through the Wall of Windows at the back.



53 Cresthaven Rise SW



Upstairs you'll find 3 Spacious Bedrooms & a Great Bonus Room where you can relax, read a book & watch T.V.



A Country-Like Setting with Easy Access to Downtown.

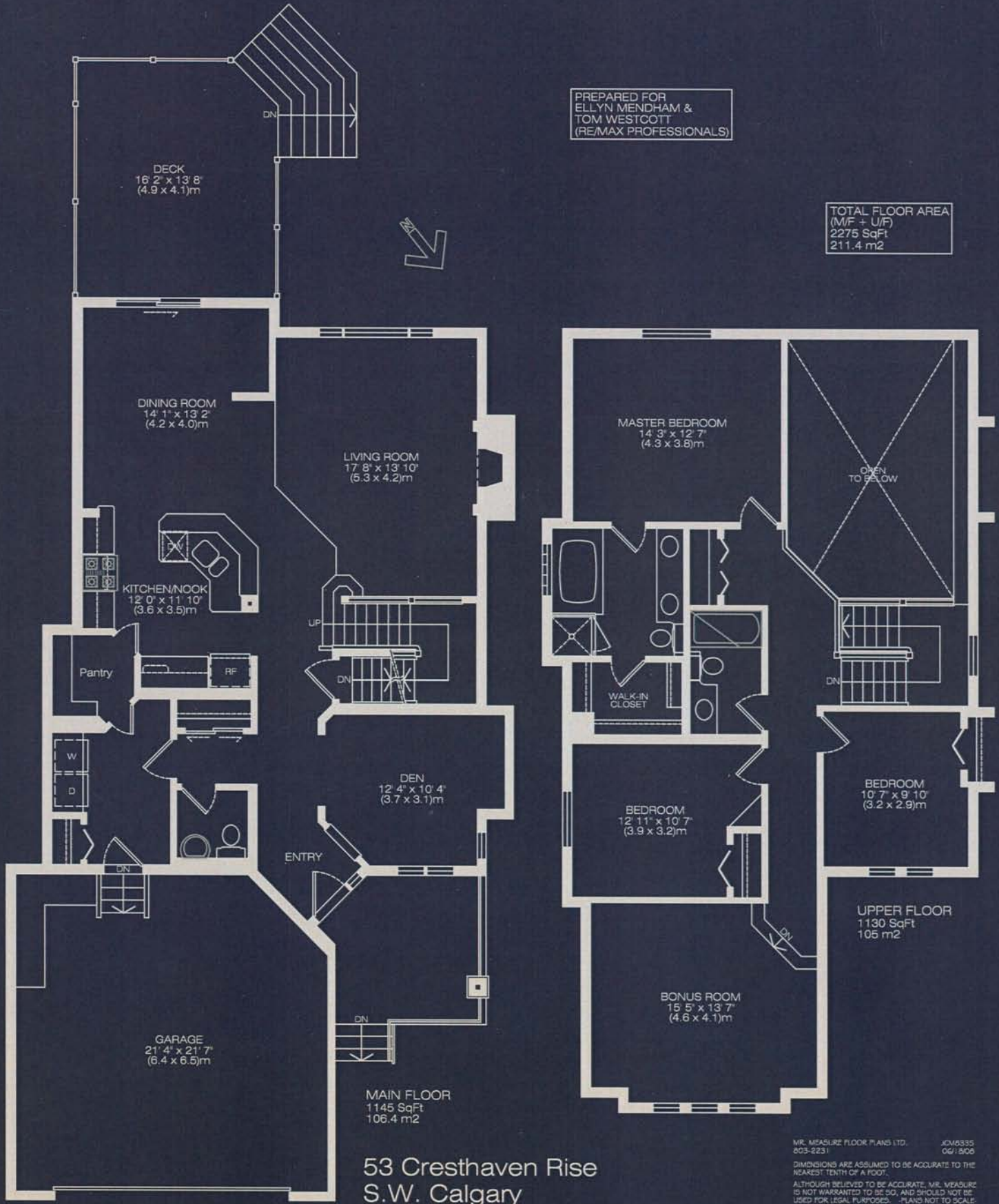
RE/MAX REALTY PROFESSIONALS

259-4141

www.CalgaryRealEstateSolutions.com

PREPARED FOR
 ELLYN MENDHAM &
 TOM WESTCOTT
 (RE/MAX PROFESSIONALS)

TOTAL FLOOR AREA
 (M/F + U/F)
 2275 SqFt
 211.4 m2



53 Cresthaven Rise
 S.W. Calgary

MR. MEASURE FLOOR PLANS LTD. JCM6335
 303-2231 06/1508
 DIMENSIONS ARE ASSUMED TO BE ACCURATE TO THE
 NEAREST TENTH OF A FOOT.
 ALTHOUGH BELIEVED TO BE ACCURATE, MR. MEASURE
 IS NOT WARRANTED TO BE SO, AND SHOULD NOT BE
 USED FOR LEGAL PURPOSES. PLANS NOT TO SCALE