

2316 – 54th Avenue S.W.



Upgraded three bedroom bungalow on a 52' X 116' R-2 lot with single front drive attached garage. Great location with easy access to downtown, parks, shopping, golf & tennis!



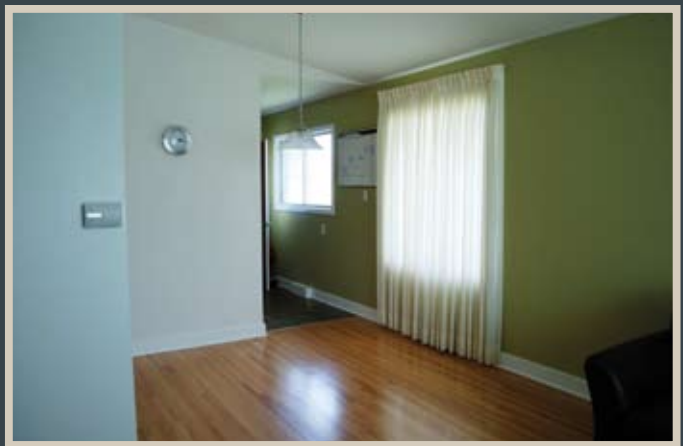
*Ellyn Mendham &
Tom Westcott*
realtors®

RE/MAX REALTY PROFESSIONALS

259-4141



www.CalgaryRealEstateSolutions.com



Gorgeous hardwood floors and cathedral ceilings highlight the main floor.



Note the new light maple kitchen cupboards and tiled floor. The bathroom boasts a granite countertop with newer vanity and tiled floor.



2316 – 54th Avenue S.W.



This home offers a great location minutes from downtown and easy access to a great kids' park, Glenmore Athletic Park, Rico Tennis Academy, and Lakeview Golf Club.

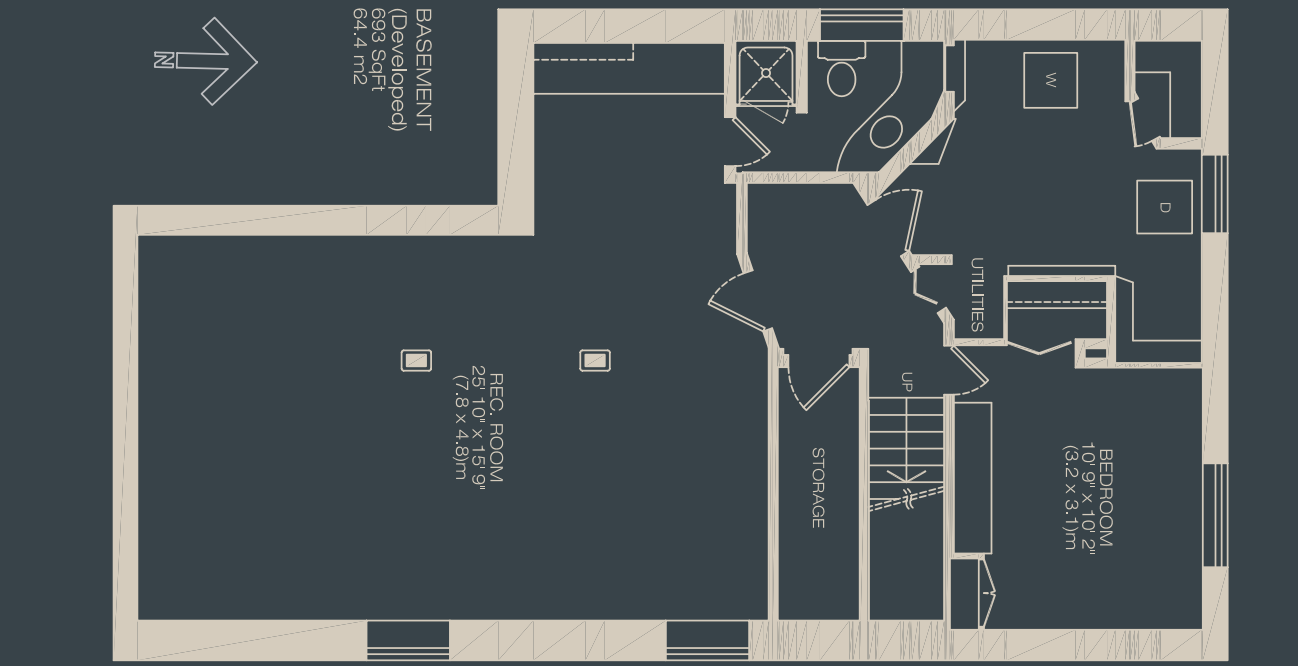
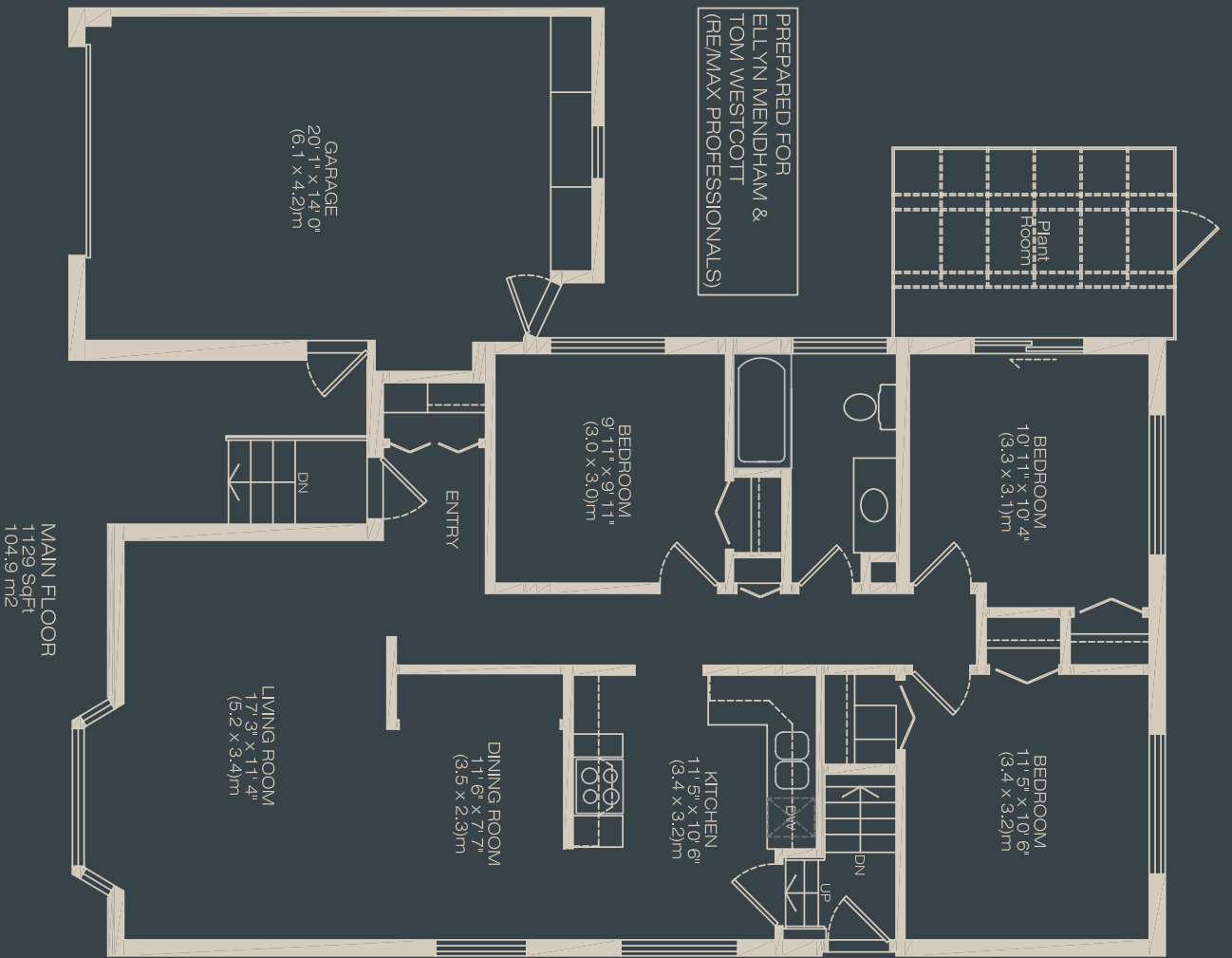


RE/MAX REALTY PROFESSIONALS

259-4141

www.CalgaryRealEstateSolutions.com

2316 54 Ave.
S.W. Calgary



MR. MEASURE FLOOR PLANS, LTD.
403-603-2231
DIMENSIONS ARE ASSUMED TO BE ACCURATE TO THE
NEAREST TENTH OF A FOOT.
ALTHOUGH BELIEVED TO BE ACCURATE, MR. MEASURE
IS NOT WARRANTED TO BE SO, AND SHOULD NOT BE
USED FOR LEGAL PURPOSES. PLANS NOT TO SCALE.

ICW48699
09/25/09